



BARJI

- Annual Angus -

Bull Sale



March 12
2026

AT THE RANCH HEADQUARTERS, LANGENBURG, SK - SALE TIME 1:00 PM



Welcome

It is with great pleasure that we take the opportunity to welcome you to our 2026 bull sale

We want to thank everyone for showing interest in our program over the years and to those who have made a huge investment for your operations, thank you so very much.

Our cow herd has become the strength of our breeding operation. Knowing that your next herd bull comes from a very maternal cow herd where the emphasis is breeding big bodied, great uddered females with good feet.. We have always believed that cow herds are built by the strength of herd bulls walking and over time I believe this to be true!

This year we have assembled the most consistent set of 2 year old bulls ever. They combine calving ease along with a common sense birth weight, desired performance, balance, attractiveness and an extremely sound structure.

The same can be said for the handful of yearlings we have on offer. Structural integrity and quality is obvious. Each yearling's dam is pictured for your appraisal.

Again this year, in an attempt to offer you the most predictable, and accurate EPD's we have Genetically Enhanced each animal's EPD's. We feel strongly in the accuracy of this science and believe that every customer of ours deserves this service.

This year we also changed how we feed our bulls. No silage. Only high quality dry tame hay chopped in a TMR 80% of the ration hay and 20%(oats, corn, barley and beet pulp) bull ration. Our bulls are greener, and we feel because they are of higher quality, they are healthier and more ready to go to work.

Please join us on Thursday March 12, 2026 for a wonderful Prime Rib dinner presented by Rylan Weir, he is the best in the business, even if you're not in the market this year for a bull we would love to have you as our guests for dinner.

If you have any questions regarding any of the offerings contact anyone of us or any of the staff at T bar C. Chris has been through the bulls and would be more than willing to answer any questions you might have.

Kindest Regards,
Robin, Michelle, John

www.barh.ca

John: 306-496-7696 jhogberg01@gmail.com **Robin:** 306-743-7490 rthogberg@sasktel.net

sale day information

SALE DAY INFORMATION

WHEN & WHERE

Thursday, March 12, 2026
At the Ranch Headquarters, Langenburg, SK
Sale Time 1:00 PM

LUNCH

Prime Rib Dinner served at Noon
Prepared by Weir's Catering


DIRECTIONS

40 miles East of Yorkton, 9 miles South of Langenburg, & 3 miles East of the Bar-H sign.

AUCTIONEER SALE STAFF

Chris Poley	306-220-5006
Shane Michelson	403-363-9973
Ben Wright	519-374-3335
Levi Rimke	204-851-4515

SALE MANAGEMENT

T Bar C Cattle Co. Ltd.  306-933-4200
info@tbarc.com

WATCH & BID ONLINE

WWW.DLMS.CA  780-699-5082
Mark Shologan

ACCOMODATIONS

Canalta Inn, Esterhazy, SK	306-745-3644
Best Western Plus, Moosomin, SK	306-435-4700
Russell Inn, Russell, MB	204-773-2186
Canalta Inn, Moosomin, SK	306-435-3034

INSURANCE

Alameda Agencies
Bonnie Thompson 306-489-2258

HERD HEALTH

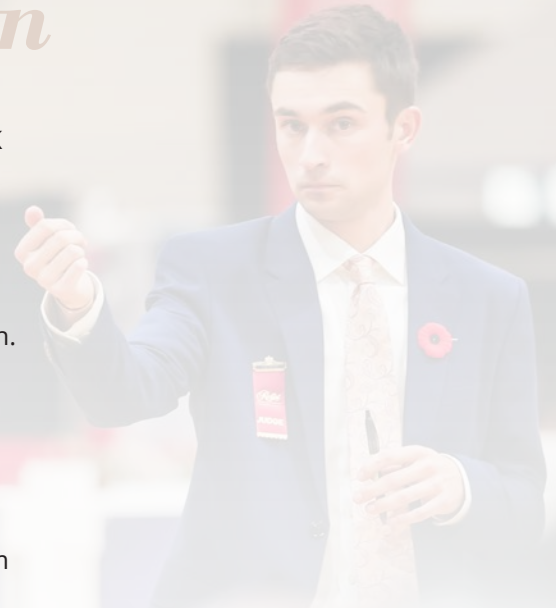
Valley Flats Veterinary Services
Dr. Rebecca Girven, DVM 306-435-3979

PHOTOGRAPHY

Seven D Media
Tia Schram 780-914-4532

SALE VIDEOS

Innovation Media
Stacey Young 780-718-0622



Directions Via Google Maps



welcome from t bar c

FROM THE DESK AT T BAR C

It is a pleasure to welcome you to the Bar H Annual Angus Bull Sale, hosted by Robin and Michelle Hogberg and their son John, who plays a very active role in the day-to-day operations at Bar H. Robin and John are true students of the Angus breed. Over the years, they have built a cow herd stacked with desirable, predictable, and highly functional traits. They make full use of all available data and selection tools when choosing herd sires, and they have traveled extensively throughout North America sourcing walking bulls to continually build and enhance their program. Those efforts are clearly evident in the consistency and quality of this outstanding set of two-year-old bulls. Two-year-olds have always been the focus at Bar H. These bulls are spring-born, raised primarily on grass, and developed on grass before coming home to large, multi-acre paddocks where they are fed a high-roughage ration. This thoughtful development program ensures buyers are purchasing sound, fully developed bulls that are ready to go out and do a man's job. You can buy these bulls with confidence, knowing that the majority of them sell to satisfied, repeat customers year after year.

In addition to their strong offering of two-year-olds, Bar H also offers a select group of yearling bulls for those who prefer a younger option. These yearlings are selected from the oldest calves born on the farm and are primarily out of first-calf heifers, which are bred slightly earlier. This group represents some of the freshest genetics at Bar H and provides an exciting preview of what's coming in future years.

If you have questions or would like help selecting bulls to meet your program's goals, don't hesitate to give Robin or John a call. They are always happy to visit and assist — and they truly love to talk Angus cattle. Hopefully you are able to join us on sale day to view this strong set of breeding bulls in person and enjoy one of the top sale meals of the spring. If you are unable to join us or have any questions leading up to the sale that myself or any of the Team at T Bar C can help you with, please call anytime.

Chris Poley



Chris Poley



Shane Michelson



Ben Wright



Levi Rimke

View the Catalogue Online
www.buyagro.com

expected progeny differences

A GUIDE TO EXPECTED PROGENY DIFFERENCES

EXPECTED PROGENY DIFFERENCE (EPD)

An EPD is the prediction of how future progeny are expected to perform relative to progeny of other animals within the same database. EPDs are expressed in units of measure for the trait, plus or minus. Interim EPDs may appear on young animals when their performance has yet to be incorporated into the American Angus Association National Cattle Evaluation (NCE) procedures. This EPD will be preceded by an "I", and may or may not include the animal's own performance record for a particular trait, depending on its availability, appropriate contemporary grouping, or data edits needed for NCE.

\$VALUE INDEX (\$VALUE)

A \$Value is an economic selection index allowing for directional change in multiple traits at once pertaining to a specific breeding objective. The \$Value is a collection of EPDs weighted by their economic value such that traits with greater impacts on the production goals have a larger economic weight associated with them. \$Values are used in practice, like an EPD, for comparison of future progeny performance across herds within a given breed.

ACCURACY (ACC)

An ACC is the reliability that can be placed on the EPD. An accuracy of close to 1.0 indicates higher reliability. Accuracy is impacted by the number of progeny and ancestral records included in the analysis.

PRODUCTION EPDS

Calving Ease Direct (CED), is expressed as a difference in percentage of unassisted births, with a higher value indicating greater calving ease in first-calf heifers. It predicts the average difference in ease with which a sire's calves will be born when he is bred to first-calf heifers.

Birth Weight EPD (BW), expressed in pounds, is a predictor of a sire's ability to transmit birth weight to his progeny compared to that of other sires.

Weaning Weight EPD (WW), expressed in pounds, is a predictor of a sire's ability to transmit weaning growth to his progeny compared to that of other sires.

Yearling Weight EPD (YW), expressed in pounds, is a predictor of a sire's ability to transmit yearling growth to his progeny compared to that of other sires.

Residual Average Daily Gain (RADG), expressed in pounds per day, is a predictor of a sire's genetic ability for postweaning gain in future progeny compared to that of other sires, given a constant amount of feed consumed.

Dry Matter Intake (DMI), expressed in pounds per day, is a predictor of difference transmitting ability for feed intake during the postweaning phase, compared to that of other sires.

Yearling Height EPD (YH), is a predictor of a sire's ability to transmit yearling height, expressed in inches, compared to that of other sires.

Scrotal Circumference EPD (SC), expressed in centimeters, is a predictor of the difference in transmitting ability for scrotal size compared to that of other sires.

MATERNAL EPDS

Heifer Pregnancy (HP), is a selection tool to increase the probability or chance of a sire's daughters becoming pregnant as first-calf heifers during a normal breeding season. A higher EPD is the more favorable direction and the EPD is reported in percentage units.

Calving Ease Maternal (CEM), is expressed as a difference in percentage of unassisted births with a higher value indicating greater calving ease in first-calf daughters. It predicts the average ease with which a sire's daughters will calve as first-calf heifers when compared to daughters of other sires.

Maternal Milk EPD (Milk), is a predictor of a sire's genetic merit for milk and mothering ability as expressed in his daughters compared to daughters of other sires. In other words, it is that part of a calf's weaning weight attributed to milk and mothering ability.

Mature Weight EPD (MW), expressed in pounds, is a predictor of the difference in mature weight of daughters of a sire compared to the daughters of other sires.

Mature Height EPD (MH), expressed in inches, is a predictor of the difference in mature height of a sire's daughters compared to daughters of other sires.

expected progeny differences

A GUIDE TO EXPECTED PROGENY DIFFERENCES

MANAGEMENT EPDS

Docility (Doc) EPD, is expressed as a difference in yearling cattle temperament, with a higher value indicating more favorable docility. It predicts the average difference of progeny from a sire in comparison with another sire's calves. In herds where temperament problems are not an issue, this expected difference would not be realized.

Claw Set EPD (Claw), is expressed in units of claw-set score, with a lower EPD being more favorable indicating a sire will produce progeny with more ideal claw set. The ideal claw set is toes that are symmetrical, even and appropriately spaced.

Foot Angle EPD (Angle), is expressed in units of foot-angle score, with a lower EPD being more favorable indicating a sire will produce progeny with more ideal foot angle. The ideal is a 45-degree angle at the pastern joint with appropriate toe length and heel depth.

CARCASS EPDS

Carcass Weight EPD (CW), expressed in pounds is a predictor of the differences in hot carcass weight of a sire's progeny compared to progeny of other sires.

Marbling EPD (Marb), expressed as a fraction of the difference in USDA marbling score of a sire's progeny compared to progeny of other sires.

Ribeye Area EPD (RE), expressed in square inches, is a predictor of the difference in ribeye area of a sire's progeny compared to progeny of other sires.

Fat Thickness EPD (Fat), expressed in inches, is a predictor of the differences in external fat thickness at the 12th rib (as measured between the 12th and 13th ribs) of a sire's progeny compared to progeny of other sires.

\$VALUE INDEX (\$VALUE)

Combined Value (\$C or CBI), an index, expressed in dollars per head, which includes all traits that make up both Maternal Weaned Calf Value (\$M) and Beef Value (\$B) with the objective that commercial producers will replace 20% of their breeding females per year with replacement heifers retained within their own herd. The remaining cull heifer and steer progeny are then assumed to be sent to the feedlot where the producers retain ownership of those cattle and sell them on a quality-based carcass merit grid. Expected progeny differences (EPDs) directly influencing a combined index: calving ease direct (CED) and maternal (CEM), weaning weight (WW), yearling weight (YW), maternal milk (Milk), heifer pregnancy (HP), docility (DOC), mature cow weight (MW), foot angle (Angle), claw set (Claw), dry matter intake (DMI), marbling (Marb), carcass weight (CW), ribeye area (RE) and fat thickness (Fat).

updated Angus GS EPDs

UPDATED ANGUS GS EPDS WILL BE AVAILABLE BY THE END OF FEBRUARY

the science of better breeding

DRIVING THE SCIENCE OF BETTER BREEDING

There's little room for error in the cattle business. Producers need the most advanced information to make smart decisions, and Angus Genetics Inc. (AGI) provides it through genomic-enhanced expected progeny differences (GE-EPDs).

GE-EPDs have become the industry standard for herd improvement, building on decades of science-backed genetic evaluation tools originated and maintained through the American Angus Association, home to the largest and ever-growing single-breed beef cattle database.

EPDs that traditionally contained all pedigree, performance and progeny information now also include results from available genomic, or DNA, tests. Breeders who use genomic technology give buyers access to AGI-generated GE-EPDs that provide:

Increased predictability and decreased risk for young and unproven animals due to enhanced accuracy of EPDs

Better characterization of genetics for difficult-to-measure performance traits (such as carcass traits, maternal traits and feed efficiency)

The ability to make more rapid progress for traits that are important to you, due to:

- more accurate selection
- easier identification of genetic outliers
- the ability to propagate young animals with confidence earlier in their lives

In fact, GE-EPDs on unproven animals have the same amount of accuracy as if they had recorded 10-36 calves, depending on the trait. That's valuable insight, offered regularly through the breed's weekly national cattle evaluation.

Trait	Progeny Equivalent	Trait	Progeny Equivalent	Trait	Progeny Equivalent
Calving Ease Direct	26	Claw Set	10	Mature Height	9
Birth Weight	23	Foot Angle	10	Carcass Weight	15
Weaning Weight	27	Heifer Pregnancy	17	Yearling Height	17
Yearling Weight	23	Calving Ease Maternal	20	Carcass Marbling	11
Dry Matter Intake	12	Milk	36	Carcass Ribeye	17
Scrotal Circumference	15	Mature Weight	15	Carcass Fat	14
Docility	12				

How do you know if EPDs are genomic-enhanced?

Ask your breeder, refer to the registration paper, or look for the AGI GE-EPD logo, Angus GS powered by partner Neogen GeneSeek or the HD50K by partner Zoetis. These images indicate animals for which low-density or high-density genomic testing has been conducted and incorporated by AGI into GE-EPDs.



WWW.ANGUS.ORG



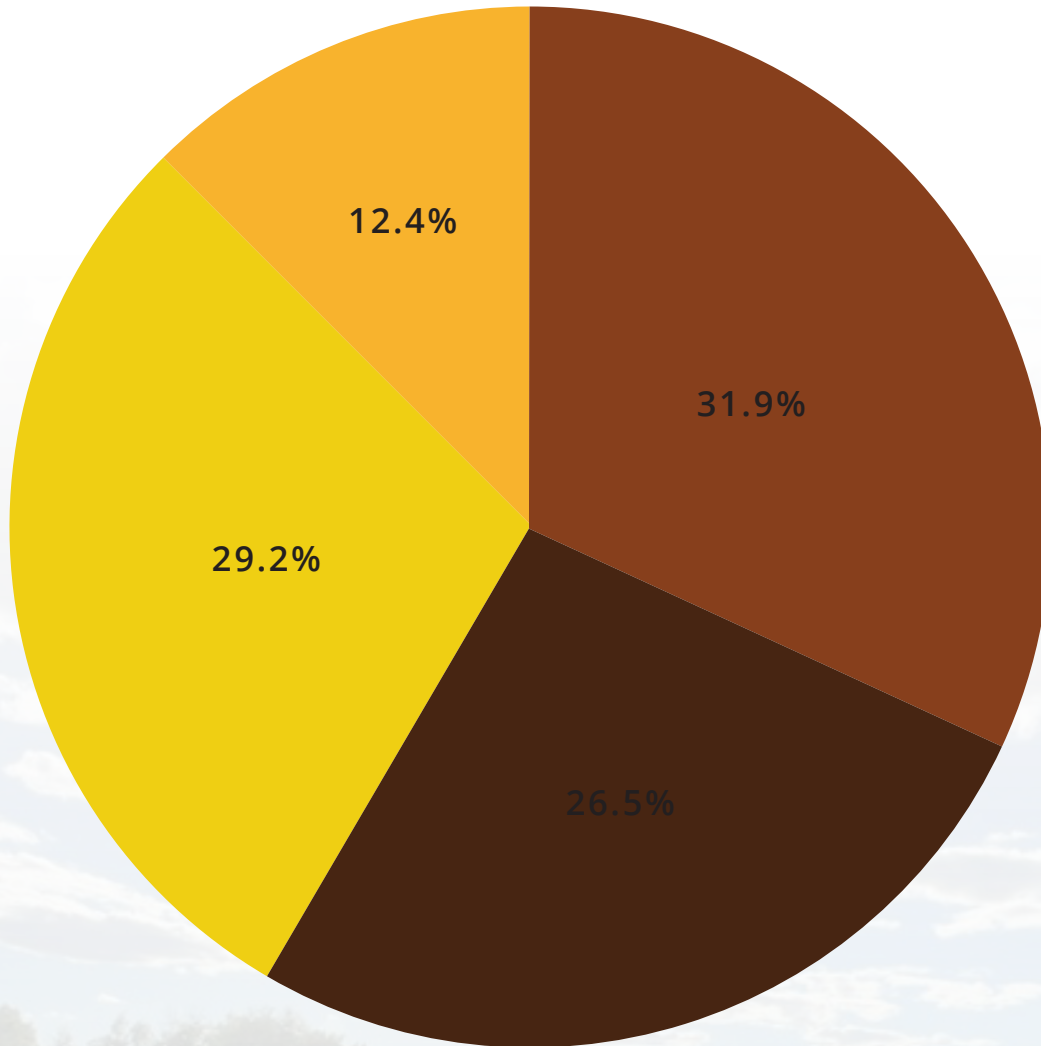
EDSEL & DELORES HOGBERG CELEBRATED THEIR 65TH WEDDING ANNIVERSARY IN 2025



quality herdsire prospects **QUALITY HERDSIRE PROSPECTS THAT ARE AFFORDABLE**

At Bar-H Land & Cattle Co., we are dedicated to being your trusted provider of top-notch Angus genetics. We are confident that our genetics can boost your profitability by improving pay weight, maternal quality, and longevity. Contact us today to discuss your specific needs—we're excited to assist you in finding the ideal bull for your operation!

PAST THREE BULL SALES - PRICING BREAKDOWN -



- Bulls selling for \$10,000+
- Bulls selling for \$7,000 - \$9,999
- Bulls selling for \$5,000 - \$6,999
- Bulls selling for less than \$4,999

bull management

BULL MANAGEMENT

WHAT THEY WERE FED

Our 2 year old bulls were fed a TMR consisting of 80% tame hay and 20% bull developer ration consisting of 1/3 oats, 1/3 corn, 1/3 barley and beet pulp. We like this ration and feel it keeps the bulls sounder, fresher and healthier. We believe we are able to present these bulls in this kind of condition because of our years of relentless pressure on quality and genetic improvement.

OUR PHILOSOPHY

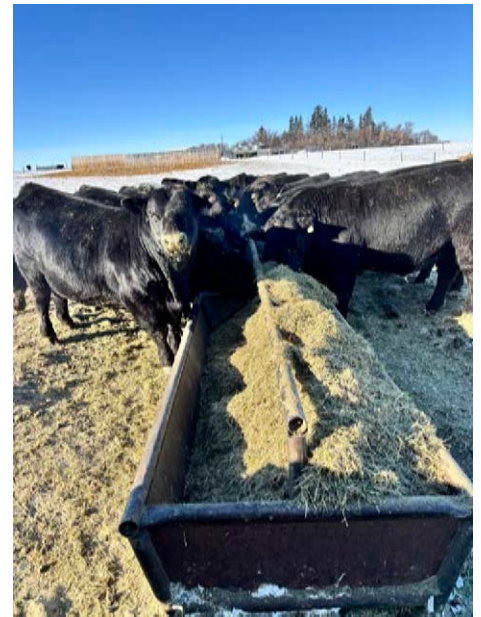
We have always put an emphasis on purchasing the highest of quality herd bulls that we were able to source, and we use them. Selling primarily extra aged bulls allows our management to be minimized and as a result we let the genetics play out without any manipulation. Most cows calve away from the yard without a camera, thus the importance of calving ease. During the summer the calves are allowed to reach their genetic potential without any supplement before weaning, only mothers milk. In October all calves are weighed and weaned and slowly advanced without pressure from high energy feeds. In the end, we hope to present a high quality, predictable product that will perform for our customers.

OUR GOALS

To produce as many pounds as possible with as little trouble as possible. We like cattle that are balanced in their profile, attractive in their appearance with enough middle and substance to add performance without sacrificing calving ease or birth weight. By using the highest of quality bulls within our bull battery, it gives every single cow a chance to improve. We put extensive pressure on our cow herd to the point that every producing female has the opportunity to contribute a high quality, desirable animal.

GENETIC NOTE

Every single bull in the sale has been DNA'd and have been Angus GS tested.



TAKE NOTE:

60%

**OF THE 2026 OFFERING IS
HEIFER APPROVED**

REF

S NIAGARA 0244

2294636 MARCH 18, 2020 IMP 0244H

Niagara has certainly left his mark on our program. He covers so many bases being a low birth, calving ease bull that doesn't compromise performance or frame. His daughters are impeccable and his sons have ample performance and frame. The foot quality on his progeny is excellent for the most discriminating of cattlemen.



REF

EXAR GROWTH FUND 0936B

2294638 FEBRUARY 14, 2020 IMP 0936H

Outstanding genetic profile that combines calving ease, lower birth and accelerated growth. His daughters are larger outlined with good udders and good teat scores with adequate milk. His sons have extra body and are softer made with extra bone. A very valuable breeding piece.

PICTURED SIRE: DEER VALLEY GROWTH FUND

REF

BAR-H ROYAL MINT 4K

2292196 JANUARY 24, 2022 AHPC 4K

Every year we use a top yearling in our program before selling him. This guy was selected because of his outstanding phenotype. His total balance, above average muscle extra bone and large scrotal made him an obvious choice. His dam was an outstanding deep bodied daughter of KR Cash CI 4602 who we lost via a lightning strike. Owned by Meridian Ag.





REF

BAR-H PURE GOLD 39K

2292304 MARCH 15, 2022 AHPC 39K

Another yearling we use in our program was this outstanding son of Bar- E- L Royal Mint. We felt this guy had all the pieces needed to qualify him for use back in our program and did he deliver. Out of Mindbenders flush sister and a maternal brother to Bar- H Sensation 22J, high seller in our 2023 sale for \$90,000 to JS Simmentals. His sons are deep bodied and soft made.

Owned by Meridian Ag.



REF

S INTRINSIC 799

2122614 MARCH 15, 2017 IMP 799E

This will be the last set of sons to sell off of this outstanding herd bull. His daughters are playing an important role in our cow herd and his sons have topped our past sales.



REF

EXAR REDEMPTION 2612B

2312837 JANUARY 3, 2022 IMP 2612K

Probably the most exciting young sire we have ever used. Very popular \$50,000 US purchase from Express Ranches with a very balanced set of EPD's along with outstanding phenotype. He was very popular while we campaigned him being an outcross to most genetics.

His sire Step Up is steeped with great cows and outstanding carcass merit. His dam is an outstanding individual being bigger framed and big bodied with extra bone. A flush sister is in Spruce Mountains and Expresses doner lineup. His progeny are born small but have extra bone, more hair and tremendous upper rib shape. We look forward to calving his first daughters. More cows were bred to Redemption in 2025 than any other bull in our steller lineup.

REF

KR INCENTIVE 3052

2360643 JANUARY 9, 2023 IMP 3052L

Incentive was our pick from the Krebs sale in 2024. A son of Sitz Incentive whos dam is one of the truly great Angus cows and out of Miss Bell another of the great Angus cows in America. Incentive 3052 has an outstanding data set and his first calves are showing that quality both males and females. We are excited about the future this powerful individual has to contribute to our program. Owned with Golden Oak Livestock



REF

BAR-H SENSATION 22J

2233145 MARCH 20, 2021 AHPC 22J

We chose to incorporate this son of Hoffman Sensation 803 back into our program after he was our high seller in the 2023 sale. The udder and teat scores are off the charts with the daughters of 803 and we feel that 22J will be even better. He is great footed, lowers birth weight and has a desirable body type. His big bodied soft made dam was a flush sister to Mindbender, who himself was a high seller in 2018 for us. We plan on incorporating Sensation 22J heavily into our program.

REF

HOFFMAN SENSATION 803

2175605 JANUARY 14, 2018 IMP 8803F

It is said that you have to calve out a bulls daughters to realize their value. That sure could be the case for Hoffman Sensation 803. He does so many things rite.... but most of all his daughters are beautifully designed and have impeccable udder and teat scores. Sons are larger framed with extra length of body.



ALL 2 YEAR OLD BULLS WERE WEANED WITH NO CREEP FEED. BIRTH WEIGHTS WERE TAKEN WITH AN ELECTRONIC SCALE AT BIRTH.



LOT
7M

BAR-H GROWTH FUND 7M
2395742 April 07 2024 BARH 7M



HEIFER APPROVED

- born unassisted
- high performing long bodied bull with great temperament
- outstanding cow family
- His dam is ELITE with the CAA
- Top 1% MCE, Top 4% CED, Top 5% RADG, Top 6% Milk, Top 20% YW, Top 25% BW

DEER VALLEY GROWTH FUND
EXAR GROWTH FUND 0936B
VINTAGE BLACKBIRD 6329

BASIN PAYWEIGHT 1682
DEER VALLEY RITA 36113
V A R DISCOVERY 2240
V A R BLACKBIRD 3153
S SUMMIT 956
HF TIBBIE 93U
KR CASH CI 4602
BH EVENING TINGE 62Y

PERF

BWT
73 lbs.

ADJ WWT
766 lbs.

BAR-H MINDBENDER 141D
BAR-H TIBBIE 22G
BAR-H BLACKBIRD 90E

ANGUS ^{GS}	CE 11	BW 0.7	WW 63	YW 119	MILK 30
----------------------------	-----------------	------------------	-----------------	------------------	-------------------



MATERNAL GRANDSIRE
BAR-H MINDBENDER 141D

"If you want something said, ask a man; if you want something done, ask a woman" - Margaret Thatcher



BARH 9M

LOT **9M** **BAR-H GROWTH FUND 9M**
2395743 April 08 2024 BARH 9M



DEER VALLEY GROWTH FUND
EXAR GROWTH FUND 0936B
VINTAGE BLACKBIRD 6329

BAR-H MINDBENDER 141D
BAR-H TIBBIE 72J
BAR-H GLORIA 14E

BASIN PAYWEIGHT 1682
DEER VALLEY RITA 36113
V A R DISCOVERY 2240
V A R BLACKBIRD 3153
S SUMMIT 956
HF TIBBIE 93U
S OPEN COUNTRY 454
BAR-H ECHO 97A

PERF
BWT 70 lbs.
ADJ WWT 704 lbs.

ANGUS ^{GS}	CE 13	BW -0.3	WW 66	YW 124	MILK 27
---------------------	----------	------------	----------	-----------	------------

HEIFER APPROVED

- born unassisted
- don't miss this good looking rascal
- unbelievable curve bending EPD's
- beautiful Mindbender dam!
- Top 2% CED, Top 4% MCE, Top 10% BW, Top 15% YW, Top 20% WW, Top 20% Milk



"God will never reject you. Whether you accept Him is your decision" - Dr. Charles Stanley



BARH 17M

LOT **17M** **BAR-H NIAGARA 17M**
2395747 April 07 2024 BARH 17M



S S NIAGARA Z29
S NIAGARA 0244
S BLOSSOM 0278

BAR-H MINDBENDER 141D
BAR-H BLACKBIRD 60E AHPC 29G
BAR-H BLACKBIRD 60E

HOOVER DAM
JET S S X144
SHIPWHEEL CHINOOK
S BLOSSOM 8378
S SUMMIT 956
HF TIBBIE 93U
KR CASH CI 4602
BAR-H ECHO 11Z

PERF
BWT 70 lbs.
ADJ WWT 728 lbs.

ANGUS ^{GS}	CE 14	BW -1.8	WW 62	YW 108	MILK 26
---------------------	----------	------------	----------	-----------	------------

HEIFER APPROVED

- born unassisted
- good looking level made bull
- generations of great cows and calving ease genetics
- Top 1% CED, Top 2% BW, Top 4% MCE, Top 25% Milk



BARH 20M

HEIFER APPROVED

- born unassisted
- combination of outstanding calving ease and growth
- dam is by the great S Titilest 1145
- Top 2% CED, Top 2% BW, Top 7% MCE, Top 15% HPG, Top 25% WW



Maternal Brother
Bar-H Intrinsic 52L

LOT
20M **BAR-H NIAGARA 20M**
2395749 April 08 2024 BARH 20M



S S NIAGARA Z29
S NIAGARA 0244
S BLOSSOM 0278

HOOVER DAM
JET S S X144
SHIPWHEEL CHINOOK
S BLOSSOM 8378
RA LINCOLN W144
S CORA 572
BAR-H BALANCER 14X
BH EVENING TINGE 1W

PERF

BWT
70 lbs.

ADJ WWT
722 lbs.

ANGUS ^{CS}	CE	BW	WW	YW	MILK
	13	-2.2	64	103	25

LOT
21M **BAR-H NIAGARA 21M**
2395750 April 08 2024 BARH 21M



S S NIAGARA Z29
S NIAGARA 0244
S BLOSSOM 0278

HOOVER DAM
JET S S X144
SHIPWHEEL CHINOOK
S BLOSSOM 8378
S A V SENSATION 5615
C A BRILL MISS EVERGREEN 101
S OPEN COUNTRY 454
BAR-H EVENING TINGE 36Z

PERF

BWT
68 lbs.

ADJ WWT
688 lbs.

ANGUS ^{CS}	CE	BW	WW	YW	MILK
	9	-0.7	63	108	22

HEIFER APPROVED

- born unassisted
- dam is a very good uddered Sensation daughter
- generations of great brood cows
- Top 7% BW, Top 10% CED, Top 20% MCE



BARH 21M



LOT
33M **BAR-H NIAGARA 33M**
 2384742 April 13 2024 BARH 33M



S S NIAGARA Z29
S NIAGARA 0244
 S BLOSSOM 0278

BAR-H MINDBENDER 141D
BAR-H TIBBIE 24G
 BAR-H RITA 30C

HOOVER DAM
 JET S S X144
 SHIPWHEEL CHINOOK
 S BLOSSOM 8378
 S SUMMIT 956
 HF TIBBIE 93U
 EXAR FOREMAN 3871B
 BAR-H CORA 75A

PERF

BWT
 82 lbs.

ADJ WWT
 744 lbs.



BAR-H NIAGARA 33M
JUNIOR BULL CALF CHAMPION
 2024 MANITOBA AG E

ANGUS ^{CS}	CE 6	BW 2.5	WW 76	YW 123	MILK 25
----------------------------	----------------	------------------	-----------------	------------------	-------------------

DAM
BAR-H TIBBIE 24G



- born unassisted
- big bodied, masculine made herd bull prospect
- 2024 Jr Bull Calf Champion at Manitoba Ag- Ex
- His Dam is ELITE with the CAA
- Top 5% WW, Top 15% YW, Top 15% Scrotal Circ., Top 15% Doc,

HEIFER APPROVED

- born unassisted
- dont miss this good looking rascal
- generations of big bodied great uddered cows
- Top 15% CED, Top 15% WW, Top 20% BW, Top 20% YW, Top 20% Milk



Maternal Grand sire
S Open Country 454



LOT
36M **BAR-H NIAGARA 36M**
2396092 April 13 2024 BARH 36M



- S S NIAGARA Z29
- S NIAGARA 0244**
- S BLOSSOM 0278
- S OPEN COUNTRY 454
- BAR-H GLORIA 130J**
- BAR-H RITA 186E

- HOOVER DAM
- JET S S X144
- SHIPWHEEL CHINOOK
- S BLOSSOM 8378
- HA OPEN COUNTRY 2047
- S GLORIA 0406
- EXAR FOREMAN 3871B
- BAR-H EVEING TINGE 71A

PERF

BWT
74 lbs.

ADJ WWT
734 lbs.

ANGUS ^{GS}	CE 8	BW 0.5	WW 70	YW 119	MILK 27
---------------------	---------	-----------	----------	-----------	------------

LOT
38M **BAR-H ROYAL MINT 38M**
2396094 April 14 2024 BARH 38M



- BAR-E-L ROYAL MINT 88G
- BAR-H ROYAL MIINT 4K**
- BAR-H BLACKBIRD 189D
- BT TITAN 0626
- BAR-H ELBAR 42G**
- BAR-H HOPE 62A

- LD CAPITALIST 316
- HF EVENING TINGE 38C
- KR CASH CI 4602
- PERRYVILLE HOPE 12N
- KOUPALS B&B TITAN 3013
- BT ELBAR 313
- BAR-H BALANCER 14X
- BH ROLLETTE 2T

PERF

BWT
82 lbs.

ADJ WWT
640 lbs.

ANGUS ^{GS}	CE -1	BW 3.7	WW 54	YW 96	MILK 24
---------------------	----------	-----------	----------	----------	------------



- born unassisted
- clean made attractively made son of Royal MInt 4K
- dam is a good uddered daughter of BT Titan
- Top 5% MH, Top 20% DMI, TOP 20% Fat



Maternal Brother
Bar-H Niagara 90L



LOT
43M **BAR-H NIAGARA 43M**
2396098 April 16 2024 BARH 43M



HEIFER APPROVED

- born unassisted
- bull is much better than his picture
- big time herd bull candidate
- very good Mindbender dam with generations of good cows
- Dam is ELITE with the CAA
- Top 7% CED, Top 8% Milk, Top 15% BW, Top 15% WW, Top 15% HPG, Top 15% MCE, Top 20% YW, Top 25% MH

S S NIAGARA Z29
S NIAGARA 0244
S BLOSSOM 0278

HOOVER DAM
JET S S X144
SHIPWHEEL CHINOOK
S BLOSSOM 8378
S SUMMIT 956
HF TIBBIE 93U
KR CASH CI 4602
BH ECHO 68X

PERF

BWT
72 lbs.

ADJ WWT
755 lbs.

BAR-H MINDBENDER 141D
BAR-H TIBBIE 44G
BAR-H BLACKBIRD 123E

ANGUS ^{CS}	CE 10	BW 0	WW 71	YW 119	MILK 29
---------------------	----------	---------	----------	-----------	------------



Research
Services

MARKETING & GENETICS SURVEY

By completing this short survey, you provide important insights into what cow-calf producers value when purchasing bulls. Participating bull sales will receive a summary of their buyers' preferences and priorities, helping improve marketing and customer alignment. All individual responses are confidential.



Marketing and Genetics Survey

HEIFER APPROVED

- born unassisted
- long bodied and very attractive
- dam is another very good Mindbender daughter
- Top 8% Milk, Top 15% WW, Top 20% YW, Top 25% MH



LOT 44M BAR-H NIAGARA 44M

2396099 April 16 2024 BARH 44M



S S NIAGARA Z29
S NIAGARA 0244
S BLOSSOM 0278

HOOVER DAM
JET S S X144
SHIPWHEEL CHINOOK
S BLOSSOM 8378
S SUMMIT 956
HF TIBBIE 93U
HF HIGH ROLLER 79R
BH 7N SUGAR 10R

PERF

BWT
84 lbs.

ADJ WWT
764 lbs.

BAR-H MINDBENDER 141D
BAR-H TIBBIE 105F
BH ROLLETTE 2T

ANGUS ^{GS}	CE 4	BW 2.2	WW 69	YW 117	MILK 29
---------------------	---------	-----------	----------	-----------	------------

LOT 47M BAR-H ROYAL MINT 47M

2396102 April 17 2024 BARH 47M



BAR-E-L ROYAL MINT 88G
BAR-H ROYAL MIINT 4K
BAR-H BLACKBIRD 189D

LD CAPITALIST 316
HF EVENING TINGE 38C
KR CASH CI 4602
PERRYVILLE HOPE 12N
KROUPALS B&B TITAN 3013
BT ELBAR 313
BAR-H BALANCER 14X
BH EVENING TINGE 53Y

PERF

BWT
90 lbs.

ADJ WWT
695 lbs.

BT TITAN 0626
BAR-H ELBAR 55G
BAR-H HOPE 7A

ANGUS ^{GS}	CE -5	BW 4.9	WW 57	YW 102	MILK 26
---------------------	----------	-----------	----------	-----------	------------



- born unassisted
- sired by Royal Mint 4K who sold to Meridian Ag in 2024
- cow family is known for great udders and teat scores
- Top 25% Milk



BARH 51M

- born unassisted
- big time cow bull here
- the very best cow family on the ranch
- Dam is ELITE with the CAA
- Top 5% MH, Top 7% WW, Top 9% YW, Top 20% MW



Maternal Granddam
Bar-H 1145 Tibbie 105B



Mat. Sib Bar-H Niagara 152L

LOT
51M **BAR-H ROYAL MINT 51M**
2396106 April 17 2024 BARH 51M



BAR-E-L ROYAL MINT 88G
BAR-H ROYAL MIINT 4K
BAR-H BLACKBIRD 189D

LD CAPITALIST 316
HF EVENING TINGE 38C
KR CASH CI 4602
PERRYVILLE HOPE 12N
KROUPALS B&B TITAN 3013

BT TITAN 0626
BAR-H TIBBIE 94G
BAR-H 1145 TIBBIE 105B

BT ELBAR 313
S TITLST 1145
BH TIBBIE 2Y

PERF

BWT
89 lbs.

ADJ WWT
805 lbs.

ANGUS^{GS}

CE
-4

BW
5.1

WW
74

YW
127

MILK
24

LOT
55M **BAR-H SENSATION 55M**
2396602 April 19 2024 BARH 55M



S A V SENSATION 5615
HOFFMAN SENSATION 803

C A BRILL MISS EVERGREEN 101

S TITLST 1145
BAR-H CORA 58F
BH EVENING TINGE 1W

S A V REGISTRY 2831
S A V BLACKCAP MAY 4136
S A V BRILLIANCE 8077
C A NW MISS EVERGREEN 813
RA LINCOLN W144

S CORA 572
HF DONE DEAL 64T
BH ELSIEMERE 3T

PERF

BWT
84 lbs.

ADJ WWT
706 lbs.

ANGUS^{GS}

CE
2

BW
2.1

WW
56

YW
95

MILK
26

- born unassisted
- very nicely designed son of Sensation 803
- Maternal Brothers to Pete Fofonoff and Wes Neb
- Top 4% Fat, Top 25% DMI, Top 25% Milk



BARH 55M



Maternal Grand sire
S Titlest 1145



LOT
56M **BAR-H REDEMPTION 56M**
 2396133 April 19 2024 BARH 56M



HEIFER APPROVED

- born unassisted
- high quality good looking herd bull candidate
- check out his EPD's they are outstanding
- dam is an outstanding daughter of carcass leading sire Poss Maverick
- Top 6% Milk, Top 7% CED, Top 9% BW, Top 9% WW, Top 9% YW, Top 9% Scrotal Circ., Top 15% RADG, Top 15% Marb, Top 20% Doc

EZAR SET UP 9178
EXAR REDEMPTION 2612B
 WILKS CHLOE 9060

G A R BIG STEP K715
 BASIN LUCY 4261
 WAR CAVALRY B063 Z044
 VINTAGE CHLOE 6137
 BASIN PAYWEIGHT 1682
 POSS PRIDE 5163
 S A V PIONEER 7301
 BROOKMORE MAXIE 36W

PERF
BWT 70 lbs.
ADJ WWT 747 lbs.

POSS MAVERICK
BAR-H MAXIE 1H
 BROOKMORE MAXIE 30Z

ANGUS ^{CS}	CE 10	BW -0.4	WW 72	YW 127	MILK 30
----------------------------	-----------------	-------------------	-----------------	------------------	-------------------



MATERNAL GRANDSIRE
 POSS MAVERICK



Dam
 Bar-H Maxie 1H

"Freedom prospers when religion is vibrant and the rule of law under God is acknowledged" - Ronald Reagan



HEIFERAPPROVED

- born unassisted
- good looking deep bodied heifer bull
- same cow family as lot 7M
- Top 4% MCE, Top 7% CED, Top 15% BW

BARH 72M

LOT **72M** BAR-H ROYAL MINT 72M
2396142 April 23 2024 BARH 72M



BAR-E-L ROYAL MINT 88G
BAR-H ROYAL MIINT 4K
BAR-H BLACKBIRD 189D

LD CAPITALIST 316
HF EVENING TINGE 38C
KR CASH CI 4602
PERRYVILLE HOPE 12N
CONNEALY INTRINSIC
S RITA 6341
BAR-H MINDBENDER 141D
BAR-H BLACKBIRD 90E

S INTRINSIC 799
BAR-H RITA 109J
BAR-H TIBBIE 22G

PERF

BWT
60 lbs.

ADJ WWT
738 lbs.

ANGUS^{GS}

CE
10

BW
0.1

WW
59

YW
105

MILK
25

LOT **74M** BAR-H SENSATION 74M
2396144 April 23 2024 BARH 74M



S A V SENSATION 5615
HOFFMAN SENSATION 803
C A BRILL MISS EVERGREEN 101

S A V REGISTRY 2831
S A V BLACKCAP MAY 4136
S A V BRILLIANCE 8077
C A NW MISS EVERGREEN 813
S SUMMIT 956
HF TIBBIE 93U
KR CASH CI 4602
BAR-H TIBBIE 34C

BAR-H MINDBENDER 141D
BAR-H TIBBIE 16G
BAR-H BLACKBIRD 38E

PERF

BWT
95 lbs.

ADJ WWT
756 lbs.

ANGUS^{GS}

CE
-3

BW
5.4

WW
67

YW
122

MILK
24

- born unassisted
- deep, balanced and good looking
- dam is an outstanding Mindbender daughter
- Top 15% YW, Top 20% WW



BARH 74M



Paternal Grand sire
S A V Sensation 5615

LOT
111M BAR-H ROYAL MINT 111M
2397456 April 29 2024 BARH 111M



LD CAPITALIST 316
BAR-E-L ROYAL MINT 88G
HF EVENING TINGE 38C

BAR-H MINDBENDER 141D
BAR-H TIBBIE 65G
BAR-H GLORIA 138E

CONNEALY CAPITALIST 028
LD DIXIE ERICA 2053
LLB REFLECTION 607A
HF EVENING TINGE 118Z
S SUMMIT 956
HF TIBBIE 93U
S OPEN COUNTRY 454
BAR-H HOPE 68A

PERF

BWT
74 lbs.

ADJ WWT
748 lbs.

ANGUS ^{CS}	CE 10	BW 0.2	WW 66	YW 116	MILK 27
---------------------	----------	-----------	----------	-----------	------------

HEIFER APPROVED

- born unassisted
- high quality son of Royal Mint
- dam is another very good Mindbender daughter
- Top 7% CED, Top 7% MCE, Top 15% BW, Top 20% WW, Top 20% YW, Top 20% Milk



BARH 111M



BARH 112M

LOT
112M BAR-H 22 SENSATION 112M
2397457 April 29 2024 BARH 112M



HOFFMAN SENSATION 803
BAR-H SENSATION 22J
BAR-H TIBBIE 87D

S A V SENSATION 5615
C A BRILL MISS EVERGREEN 101
S SUMMIT 956
HF TIBBIE 93U
CONNEALY INTRINSIC
S RITA 6341
HF DONE DEAL 64T
BH 18M SILKY 17R

S INTRINSIC 799
BAR-H RITA 143K
BH EVENING TINGE 32Y

PERF

BWT
62 lbs.

ADJ WWT
702 lbs.

ANGUS ^{CS}	CE 9	BW -0.4	WW 52	YW 89	MILK 29
---------------------	---------	------------	----------	----------	------------

HEIFER APPROVED

- born unassisted
- very attractive calving ease bull
- sired by Bar- H Sensation 22J, high selling bull in 2023 to JS Simmentals
- He will improve feet and udder quality
- Top 4% MCE, Top 8% Milk, Top 9% BW, Top 10% CED



BARH 115M

- born unassisted
- outstanding performance bull with attractive look
- dam is an outstanding daughter of Mindbender 141D
- maternal brother to Darren Andrew, Alberta
- Top 6% Milk, Top 8% WW, Top 15% YW, Top 15% Teat, Top 20% Fat



Maternal Brother
Bar-H Intrinsic 96L

LOT
115M **BAR-H SENSATION 115M** 
2397459 April 30 2024 BARH 115M

S A V SENSATION 5615
HOFFMAN SENSATION 803
C A BRILL MISS EVERGREEN 101

S A V REGISTRY 2831
S A V BLACKCAP MAY 4136
S A V BRILLIANCE 8077
C A NW MISS EVERGREEN 813
S SUMMIT 956
HF TIBBIE 93U
S OPEN COUNTRY 454
BAR-H ECHO 97A

PERF
BWT
98 lbs.
ADJ WWT
846 lbs.

ANGUS ^{GS}	CE	BW	WW	YW	MILK
	-3	5.5	73	125	30

LOT
116M **BAR-H ROYAL MINT 116M** 
2397460 May 01 2024 BARH 116M

BAR-E-L ROYAL MINT 88G
BAR-H ROYAL MIINT 4K
BAR-H BLACKBIRD 189D

LD CAPITALIST 316
HF EVENING TINGE 38C
KR CASH CI 4602
PERRYVILLE HOPE 12N
HA OPEN COUNTRY 2047
S GLORIA 0406
HF BRUIN 96T
BH 7N SASHA 11R

PERF
BWT
80 lbs.
ADJ WWT
762 lbs.

ANGUS ^{GS}	CE	BW	WW	YW	MILK
	5	1.5	63	109	27

HEIFER APPROVED

- born unassisted
- very good long bodied smooth made bull
- dam is a long bodied good uddered Open Country daughter
- Top 15% MH, Top 20% DMI, Top 20% Milk,



BARH 116M



Maternal Brother to Dam
Bar-H Crossfire 29C

HEIFER APPROVED

- born unassisted
- good looking, smooth made heifer bull
- sired by Pure Gold 39k who sold to Meridian Ag in 2024
- dam is another big time daughter of Mindbender
- Top 1% MCE, Top 4% CED, Top 15% BW, Top 15% Milk, Top 20% WW, Top 25% YW, Top 25% MH



Maternal Brother
Bar-H Niagara 131L

LOT
120M BAR-H PURE GOLD 120M
2397461 May 03 2024 BARH 120M



BAR-E-L ROYAL MINT 88G
BAR-H PURE GOLD 39K
BAR-H TIBBIE 87D

BAR-H MINDBENDER 141D
BAR-H TIBBIE 78H
BAR-H CORA 56B

LD CAPITALIST 316
HF EVENING TINGE 38C
S SUMMIT 956
HF TIBBIE 93U
S SUMMIT 956
HF TIBBIE 93U
S TITLST 1145
BH EVENING TINGE 60Y

PERF

BWT
68 lbs.

ADJ WWT
691 lbs.

ANGUS ^{GS}	CE 11	BW 0	WW 66	YW 113	MILK 28
---------------------	----------	---------	----------	-----------	------------

LOT
126M BAR-H PURE GOLD 126M
2397624 May 04 2024 BARH 126M



BAR-E-L ROYAL MINT 88G
BAR-H PURE GOLD 39K
BAR-H TIBBIE 87D

HOFFMAN SENSATION 803
BAR-H MISS EVERGREEN 25J
BAR-H TIBBIE 25C

LD CAPITALIST 316
HF EVENING TINGE 38C
S SUMMIT 956
HF TIBBIE 93U
S A V SENSATION 5615
C A BRILL MISS EVERGREEN 101
BAR-H CROSSFIRE 63A
BAR-H HOPE 7A

PERF

BWT
60 lbs.

ADJ WWT
673 lbs.

ANGUS ^{GS}	CE 10	BW -0.4	WW 58	YW 102	MILK 28
---------------------	----------	------------	----------	-----------	------------



HEIFER APPROVED

- born unassisted
- very attractive calving ease bull
- sired by Pure Gold who's dam is a flush sister to Mindbender
- dam is backed by generations of great uddered females
- Top 1% MCE, Top 7% CED, Top 9% BW, Top 15% Milk

"Without God, democracy will not and cannot long endure" - Ronald Reagan



BARH 134M



BARH 136M

LOT
134M BAR-H 22 SENSATION 134M
2398393 May 05 2024 BARH 134M



S A V SENSATION 5615
HOFFMAN SENSATION 803 C A BRILL MISS EVERGREEN 101
BAR-H SENSATION 22J S SUMMIT 956
BAR-H TIBBIE 87D HF TIBBIE 93U
DEER VALLEY GROWTH FUND
EXAR GROWTH FUND 0936B VINTAGE BLACKBIRD 6329
BAR-H BLACKBIRD GF 132K BAR-H MINDBENDER 141D
BAR-H TIBBIE 21G BAR-H GLORIA 14E

PERF
BWT 67 lbs.
ADJ WWT 715 lbs.

ANGUS ^{CS}	CE 12	BW -0.7	WW 58	YW 104	MILK 33
----------------------------	-----------------	-------------------	-----------------	------------------	-------------------

HEIFER APPROVED

- born unassisted
- great balance to this high quality individual
- impeccable cow family
- Top 2% Milk, Top 3% CED, Top 4% MCE, Top 7% BW

LOT
136M BAR-H PURE GOLD 136M
2398397 May 06 2024 BARH 136M



LD CAPITALIST 316
BAR-E-L ROYAL MINT 88G HF EVENING TINGE 38C
BAR-H PURE GOLD 39K S SUMMIT 956
BAR-H TIBBIE 87D HF TIBBIE 93U
HA OPEN COUNTRY 2047
S OPEN COUNTRY 454 S GLORIA 0406
BAR-H GLORIA 20E HF DONE DEAL 64T
BAR-H EVENING TINGE 36Z HF TIBBIE 196S

PERF
BWT 73 lbs.
ADJ WWT 782 lbs.

ANGUS ^{CS}	CE 8	BW 0.3	WW 67	YW 114	MILK 26
----------------------------	----------------	------------------	-----------------	------------------	-------------------

HEIFER APPROVED

- born unassisted
- another outstanding son of Pure Gold 39K
- dam is a deep bodied attractive daughter of Open Country
- Top 15% CED, Top 15% MCE, Top 20% BW, Top 20% WW, Top 25% YW, Top 25% Milk



BARH 140M



BARH 141M

LOT
140M BAR-H 22 SENSATION 140M
2398400 May 08 2024 BARH 140M



S A V SENSATION 5615
HOFFMAN SENSATION 803 C A BRILL MISS EVERGREEN 101
BAR-H SENSATION 22J S SUMMIT 956
BAR-H TIBBIE 87D HF TIBBIE 93U
S INTRINSIC 799 CONNEALY INTRINSIC
BAR-H RITA 23K S RITA 6341
RRAR GEORGINA 47E JL UPWARD 2250
MVF GEORGINA 176X

PERF
BWT 80 lbs.
ADJ WWT 762 lbs.

ANGUS ^{CS}	CE 2	BW 3	WW 62	YW 108	MILK 29
----------------------------	----------------	----------------	-----------------	------------------	-------------------

HEIFER APPROVED

- born unassisted
- Sensation 22j will sire daughters with very good udders
- dam is a very good uddered daughter of Intrinsic 799
- Top 8% Milk



Dam of 141M
Bar-H Cora 18B



Granddam of 140M & 141M
HF Tibbie 93U

LOT
141M BAR-H INTRINSIC 141M
2398401 May 08 2024 BARH 141M



CONNEALY INTRINSIC
S INTRINSIC 799
S RITA 6341
S TITLES 1145
BAR-H CORA 18B
HF TIBBIE 93U
CONNEALY GREELEY
JAZZY OF CONANGA 4660 860C
CONNEALY FREIGHTLINER
S RITA 4309
RA LINCOLN W144
S CORA 572
S A V 004 PREDOMINANT 4438
HF TIBBIE 35K

PERF
BWT 82 lbs.
ADJ WWT 666 lbs.

ANGUS ^{CS}	CE 6	BW 1.4	WW 61	YW 108	MILK 24
----------------------------	----------------	------------------	-----------------	------------------	-------------------

HEIFER APPROVED

- born unassisted
- dam is a full sister to Bar- H Crossfire
- this will be the last of the S Intrinsic progeny to sell
- Top 15% Doc, Top 25% Teat, Top 25% Udder



BARH 142M



BARH 145M

LOT
142M BAR-H NIAGRA 142M
2398402 May 08 2024 BARH 142M



S S NIAGARA Z29
S NIAGARA 0244
S BLOSSOM 0278

HOOVER DAM
JET S S X144
SHIPWHEEL CHINOOK
S BLOSSOM 8378
KROUPALS B&B TITAN 3013
BT ELBAR 313
S TITLES 1145
BH EVENING TINGE 60Y

PERF

BWT
73 lbs.

ADJ WWT
791 lbs.

ANGUS ^{GS}	CE 9	BW -1.3	WW 74	YW 120	MILK 26
----------------------------	----------------	-------------------	-----------------	------------------	-------------------

HEIFER APPROVED

- born unassisted
- outstanding Niagara son
- very good cow family of big bodied cows with good udders
- Top 4% BW, Top 7% WW, Top 10% CED, Top 15% YW, Top 15% HPG, Top 20% Claw, Top 25% Milk, Top 25% Teat



Maternal Grand sire of 145M
EXAR Foreman 3871B

LOT
145M BAR-H PURE GOLD 145M
2398405 May 08 2024 BARH 145M



BAR-E-L ROYAL MINT 88G
BAR-H PURE GOLD 39K
BAR-H TIBBIE 87D

LD CAPITALIST 316
HF EVENING TINGE 38C
S SUMMIT 956
HF TIBBIE 93U
EXAR CLASSEN 1422B
EXAR RITA 84300
HF DONE DEAL 64T
HF BESSIE 334U

PERF

BWT
78 lbs.

ADJ WWT
757 lbs.

ANGUS ^{GS}	CE 3	BW 2.5	WW 75	YW 124	MILK 29
----------------------------	----------------	------------------	-----------------	------------------	-------------------

HEIFER APPROVED (caution)

- born unassisted
- very good, rugged made bull
- dam is a big bodied cow that never misses
- Top 6% WW, Top 8% Milk, Top 9% MH, Top 15% YW, Top 20% MCE, Top 20% MW, Top 25% CW

"Obey God & leave all the consequences to Him" - Dr. Charles Stanley

HEIFER APPROVED

- born unassisted
- big time heifer bull
- cow family is second to none
- Top 7% MCE, Top 15% CED, Top 15% WW, Top 15% CW, Top 15% MH, Top 20% YW, Top 25% BW, Top 25% Milk



Maternal Brother
Bar-H Niagara 170L

BARH 146M

LOT 146M BAR-H ROYAL MINT 146M

2398406 May 08 2024 BARH 146M



LD CAPITALIST 316
BAR-E-L ROYAL MINT 88G
HF EVENING TINGE 38C

CONNEALY CAPITALIST 028
LD DIXIE ERICA 2053
LLB REFLECTION 607A
HF EVENING TINGE 118Z
CONNEALY INTRINSIC
S RITA 6341
HF HIGH ROLLER 79R
HF TIBBIE 93U

PERF

BWT
72 lbs.

ADJ WWT
770 lbs.

ANGUS ^{GS}	CE 8	BW 0.8	WW 70	YW 119	MILK 26
---------------------	---------	-----------	----------	-----------	------------

LOT 147M BAR-H ROYAL MINT 147M

2398407 May 08 2024 BARH 147M



LD CAPITALIST 316
BAR-E-L ROYAL MINT 88G
HF EVENING TINGE 38C

CONNEALY CAPITALIST 028
LD DIXIE ERICA 2053
LLB REFLECTION 607A
HF EVENING TINGE 118Z
HA OPEN COUNTRY 2047
S GLORIA 0406
HF BRUIN 96T
BH TIBBIE 23U

PERF

BWT
90 lbs.

ADJ WWT
829 lbs.

ANGUS ^{GS}	CE 1	BW 3.6	WW 77	YW 133	MILK 25
---------------------	---------	-----------	----------	-----------	------------



BARH 147M

- born unassisted
- long bodied and smooth made
- dam is a big bodied with extra frame and a good udder
- Top 5% WW, Top 6% YW



Sire Bar-E-L Royal Mint 88G

"Perfection is not attainable, but if we chase perfection we can catch excellence" - Vince Lombardi



- born unassisted
- long bodied and smooth made
- dam is sired by S Titlest 1145
- Top 6% DMI, Top 25% MH

BARH 148M

LOT
148M BAR-H ROYAL MINT 148M
2398408 May 09 2024 BARH 148M



BAR-E-L ROYAL MINT 88G
BAR-H ROYAL MIINT 4K
BAR-H BLACKBIRD 189D

LD CAPITALIST 316
HF EVENING TINGE 38C
KR CASH CI 4602
PERRYVILLE HOPE 12N
RA LINCOLN W144
S CORA 572
HF BRUIN 96T
BH TIBBIE 39U

S TITLEST 1145
BAR-H CORA 76C
BH ECHO 37Y

PERF

BWT
91 lbs.

ADJ WWT
672 lbs.

ANGUS ^{GS}	CE 1	BW 2.3	WW 48	YW 87	MILK 24
---------------------	---------	-----------	----------	----------	------------

LOT
151M BAR-H SENSATION 151M
2398409 May 10 2024 BARH 151M



S A V SENSATION 5615
HOFFMAN SENSATION 803

C A BRILL MISS EVERGREEN 101

BT TITAN 0626
BAR-H ELBAR 64G
BAR-H CORA 136D

S A V REGISTRY 2831
S A V BLACKCAP MAY 4136
S A V BRILLIANCE 8077
C A NW MISS EVERGREEN 813
KROUPALS B&B TITAN 3013
BT ELBAR 313
S TITLEST 1145
BAR-H TIBBIE 77Z

PERF

BWT
85 lbs.

ADJ WWT
772 lbs.

ANGUS ^{GS}	CE -3	BW 3.8	WW 70	YW 117	MILK 24
---------------------	----------	-----------	----------	-----------	------------

- born unassisted
- big outlined son of Hoffman Sensation 803
- the Sensation daughters make beautiful cows
- same cow family as feature yearling 15N
- Top 15% WW, Top 20% YW



BARH 151M

- born unassisted
- big time cow bull
- big bodied, rugged brute here
- dam is a big bodied beautiful cow with a very good udder and teat score

- Top 3% WW, Top 4% YW, Top 4% Milk, Top 5% MH, Top 15% MW



BARH 156M



Dam
Bar-H Rita 30C

LOT
156M BAR-H PURE GOLD 156M
2398411 May 12 2024 BARH 156M



BAR-E-L ROYAL MINT 88G
BAR-H PURE GOLD 39K
BAR-H TIBBIE 87D

EXAR FOREMAN 3871B
BAR-H RITA 30C
BAR-H CORA 75A

LD CAPITALIST 316
HF EVENING TINGE 38C
S SUMMIT 956
HF TIBBIE 93U
EXAR CLASSEN 1422B
EXAR RITA 84300
S TITLST 1145
PERRYVILLE HOPE 12N

PERF

BWT
97 lbs.

ADJ WWT
826 lbs.

ANGUS ^{GS}	CE -1	BW 4.8	WW 80	YW 137	MILK 31
---------------------	----------	-----------	----------	-----------	------------

LOT
161M BAR-H INTRINSIC 161M
2398415 May 14 2024 BARH 161M



CONNEALY INTRINSIC
S INTRINSIC 799
S RITA 6341

BAR-H DOMINATOR 30Z
BAR-H TIBBIE 96B
BH ROSEBUD 11Y

CONNEALY GREELEY
JAZZY OF CONANGA 4660 860C
CONNEALY FREIGHTLINER
S RITA 4309
BAR-H BALANCER 14X
HF TIBBIE 93U
HF IDEAL 341W
BH EVENING TINGE 48W

PERF

BWT
86 lbs.

ADJ WWT
736 lbs.

ANGUS ^{GS}	CE -1	BW 4.4	WW 61	YW 107	MILK 28
---------------------	----------	-----------	----------	-----------	------------



BARH 161M

- born unassisted
- clean made attractive bull
- this will be the last of the Intrinsic's to sell
- dam is a deep bodied attractive cow
- Dam is ELITE with CAA
- Top 15% Milk, Top 15% MH, Top 25% Doc



Full Brother
Bar-H Intrinsic 22K

"All my theology is reduced to this narrow compass... Jesus Christ came into the world to save all sinners" - Archibald Alexander



LOT
164M **BAR-H PURE GOLD 164M**
 2398416 May 16 2024 BARH 164M



- born unassisted
- big deep bodied rugged bull here
- his sire Pure Gold did a phenomenal job breeding for us
- his dam 54J is a phenotypic standout and our very best Royal Mint daughter
- Top 2% WW, Top 3% YW, Top 6% Milk

BAR-E-L ROYAL MINT 88G
BAR-H PURE GOLD 39K
 BAR-H TIBBIE 87D

LD CAPITALIST 316
 HF EVENING TINGE 38C
 S SUMMIT 956
 HF TIBBIE 93U

PERF

BWT
 89 lbs.

BAR-E-L ROYAL MINT 88G
BAR-H EVENING TINGE 54J
 BAR-H RITA 30C

LD CAPITALIST 316
 HF EVENING TINGE 38C
 EXAR FOREMAN 3871B
 BAR-H CORA 75A

ADJ WWT
 831 lbs.

ANGUS ^{CS}	CE 5	BW 2.1	WW 82	YW 140	MILK 30
----------------------------	----------------	------------------	-----------------	------------------	-------------------

BAR-H LAND & CATTLE CO. ANNUAL ANGUS BULL SALE

Associate Judge - National Western
ASSOCIATE JUDGE AT THE NATIONAL WESTERN
WITH KEVIN JENSEN FOR THE SIMMENTAL PEN SHOW

"A warm smile is the universal language of kindness" - William Arthur Ward

- born unassisted
- long, smooth made son of Royal Mint 4K
- dam is a very nice moderate female with a very good udder.
- Top 25% Milk



LOT
165M BAR-H ROYAL MINT 165M
2398417 May 17 2024 BARH 165M



BAR-E-L ROYAL MINT 88G
BAR-H ROYAL MIINT 4K
BAR-H BLACKBIRD 189D

LD CAPITALIST 316
HF EVENING TINGE 38C
KR CASH CI 4602
PERRYVILLE HOPE 12N
KR CASH CI 4602
BAR-H CORA 79A
S TITTEST 1145
BH EVENING TINGE 26Y

PERF

BWT
87 lbs.

ADJ WWT
676 lbs.

BAR-H CASH 86E
BAR-H 60G
BAR-H CORA 54C

ANGUS ^{GS}	CE 4	BW 1.2	WW 49	YW 88	MILK 26
---------------------	---------	-----------	----------	----------	------------

LOT
166M BAR-H ROYAL MINT 166M
2398418 May 17 2024 BARH 166M



BAR-E-L ROYAL MINT 88G
BAR-H ROYAL MIINT 4K
BAR-H BLACKBIRD 189D

LD CAPITALIST 316
HF EVENING TINGE 38C
KR CASH CI 4602
PERRYVILLE HOPE 12N
HA OPEN COUNTRY 2047
S GLORIA 0406
HF BRUIN 96T
BH 18M ECLAIR 19R

PERF

BWT
84 lbs.

ADJ WWT
679 lbs.

S OPEN COUNTRY 454
BAR-H GLORIA 13E
BAR-H ECHO 31Z

ANGUS ^{GS}	CE 6	BW 1.9	WW 52	YW 94	MILK 21
---------------------	---------	-----------	----------	----------	------------



HEIFER APPROVED

- (cautious)
- born unassisted
 - very good bull, much better than his picture shows
 - his dam is a deep bodied good uddered cow that comes from a cow family that moderates birth
 - Top 8% DMI, Top 15% MCE, Top 25% Scrotal Circ.



- born unassisted
- this will be the last of the Intrinsics to sell
- dam is a big bodied rugged cow

BARH 167M

LOT
167M BAR-H INTRINSIC 167M
2398419 May 17 2024 BARH 167M



CONNEALY INTRINSIC
S INTRINSIC 799
S RITA 6341

CONNEALY GREELEY
JAZZY OF CONANGA 4660 860C
CONNEALY FREIGHTLINER
S RITA 4309
HA OPEN COUNTRY 2047

S OPEN COUNTRY 454
BAR-H GLORIA 138E
BAR-H HOPE 68A

S GLORIA 0406
BAR-H BALANCER 14X
HF MAYFLOWER 56S

PERF

BWT
94 lbs.

ADJ WWT
670 lbs.

ANGUS ^{GS}	CE 1	BW 4.4	WW 58	YW 104	MILK 25
----------------------------	----------------	------------------	-----------------	------------------	-------------------

LOT
174M BAR-H INTRINSIC 174M
2398422 May 21 2024 BARH 174M



CONNEALY INTRINSIC
S INTRINSIC 799
S RITA 6341

CONNEALY GREELEY
JAZZY OF CONANGA 4660 860C
CONNEALY FREIGHTLINER
S RITA 4309
BARSTOW CASH M1F
WK BLACKBIRD 5066
HF DONE DEAL 64T
HF MISS ANNIE 70S

KR CASH CI 4602
BAR-H BLACKBIRD 76E
BH EVENING TINGE 60Y

PERF

BWT
74 lbs.

ADJ WWT
652 lbs.

ANGUS ^{GS}	CE 8	BW 1.4	WW 53	YW 93	MILK 18
----------------------------	----------------	------------------	-----------------	-----------------	-------------------

HEIFER APPROVED

- born unassisted
- a very attractive well made son of Intrinsic
- dam is a birth weight reducer
- Top 2% MCE, Top 15% CED, Top 20% DMI



BARH 174M

HEIFER APPROVED

- born unassisted to a first calf Niagara heifer
- His sire Sensation 22J is siring low birth and calving ease
- use this guy with confidence on heifers
- Top 3% CED, Top 3% BW, Top 4% MCE, Top 25% Milk



BARH 175M

LOT 175M BAR-H 22 SENSATION 175M

2398423 May 21 2024 BARH 175M



HOFFMAN SENSATION 803 C A BRILL MISS EVERGREEN 101
BAR-H SENSATION 22J
 BAR-H TIBBIE 87D
 S NIAGARA 0244
BAR-H BLOSSOM 128K
 BAR-H TIBBIE 12G

S A V SENSATION 5615
 S SUMMIT 956
 HF TIBBIE 93U
 S S NIAGARA Z29
 S BLOSSOM 0278
 BAR-H MINDBENDER 141D
 BAR-H BLACKBIRD 34E

PERF

BWT
66 lbs.

ADJ WWT
609 lbs.

ANGUS^{GS}

CE
12

BW
-1.5

WW
46

YW
84

MILK
26

LOT 177M BAR-H 22 SENSATION 177M

2398425 May 24 2024 BARH 177M



HOFFMAN SENSATION 803 C A BRILL MISS EVERGREEN 101
BAR-H SENSATION 22J
 BAR-H TIBBIE 87D
 EXAR GROWTH FUND 0936B
BAR-H BLACKBIRD GF 133K
 BH EVENING TINGE 31Y

S A V SENSATION 5615
 S SUMMIT 956
 HF TIBBIE 93U
 DEER VALLEY GROWTH FUND
 VINTAGE BLACKBIRD 6329
 HF DONE DEAL 64T
 PERRYVILLE ABBY 17N

PERF

BWT
68 lbs.

ADJ WWT
684 lbs.

ANGUS^{GS}

CE
10

BW
-0.8

WW
47

YW
86

MILK
31



BARH 177M

HEIFER APPROVED

- born unassisted to first calf heifer
- dam is backed by generations of low birth and calving ease
- Top 2% MCE, Top 4% Milk, Top 6% BW, Top 7% CED

"Nothing can bring a real sense of security into the home except true love" - Billy Graham



BARH 178M



BARH 179M

LOT
178M BAR-H PURE GOLD 178M
2398426 May 24 2024 BARH 178M



BAR-E-L ROYAL MINT 88G
BAR-H PURE GOLD 39K
BAR-H TIBBIE 87D

BAR-H MINDBENDER 141D
BAR-H TIBBIE 1F
BAR-H CORA 97D

LD CAPITALIST 316
HF EVENING TINGE 38C
S SUMMIT 956
HF TIBBIE 93U
S SUMMIT 956
HF TIBBIE 93U
S TITLST 1145
BH EVENING TINGE 87Y

PERF

BWT
87 lbs.

ADJ WWT
697 lbs.

ANGUS ^{GS}	CE 2	BW 2.7	WW 72	YW 125	MILK 30
----------------------------	----------------	------------------	-----------------	------------------	-------------------

- born unassisted
- very complete son of Pure Gold 39K
- dam is an outstanding Mindbender daughter that is easy to find
- Top 6% Milk, Top 9% WW, Top 15% YW, Top 15% MH, Top 20% Udder, Top 25% MW



Maternal Granddam of 178M
Bar-H Cora 97D



Mat. Sib to Dam of 178M
Bar-H Growth Fund 87L

LOT
179M BAR-H INTRINSIC 179M
2398427 May 25 2024 BARH 179M



CONNEALY INTRINSIC
S INTRINSIC 799
S RITA 6341

BAR-H CROSSFIRE 63A
BAR-H TIBBIE 5C
BAR-H HOPE 23A

CONNEALY GREELEY
JAZZY OF CONANGA 4660 860C
CONNEALY FREIGHTLINER
S RITA 4309
S TITLST 1145
HF TIBBIE 93U
BAR-H BALANCER 14X
BH ROLLETTE 53W

PERF

BWT
89 lbs.

ADJ WWT
727 lbs.

ANGUS ^{GS}	CE 3	BW 3.3	WW 62	YW 109	MILK 22
----------------------------	----------------	------------------	-----------------	------------------	-------------------

- born unassisted
- good moderate Intrinsic son
- dam is by one of the last Crossfire daughters we have in production

- born unassisted
- a very good bull with all the rite pieces
- his dam has been a stellar producer for us, daughter of 93U, one of our favourites
- maternal brother to Bar- H Money Made....43,000 high seller in 2017 to Everblack
- Top 8% WW, Top 8% Milk, Top 15% YW, Top 15% MH



BARH 180M



Dam
Bar-H 1145 Tibbie 105B

LOT
180M BAR-H PURE GOLD 180M
2398428 May 26 2024 BARH 180M

BAR-E-L ROYAL MINT 88G
BAR-H PURE GOLD 39K
BAR-H TIBBIE 87D

S TITLST 1145
BAR-H 1145 TIBBIE 105B
BH TIBBIE 2Y

LD CAPITALIST 316
HF EVENING TINGE 38C
S SUMMIT 956
HF TIBBIE 93U
RA LINCOLN W144
S CORA 572
HF HIGH ROLLER 79R
HF TIBBIE 93U

PERF
BWT
90 lbs.
ADJ WWT
707 lbs.

ANGUS ^{GS}	CE	BW	WW	YW	MILK
	4	3.1	73	122	29

LOT
181M BAR-H PURE GOLD 181M
2398433 May 26 2024 BARH 181M

BAR-E-L ROYAL MINT 88G
BAR-H PURE GOLD 39K
BAR-H TIBBIE 87D

EXAR FOREMAN 3871B
BAR-H RITA 3C
BAR-H HOPE 16A

LD CAPITALIST 316
HF EVENING TINGE 38C
S SUMMIT 956
HF TIBBIE 93U
EXAR CLASSEN 1422B
EXAR RITA 84300
BAR-H BALANCER 14X
BH EVENING TINGE 46Y

PERF
BWT
89 lbs.
ADJ WWT
818 lbs.

ANGUS ^{GS}	CE	BW	WW	YW	MILK
	1	3.9	77	128	31



BARH 181M

- born unassisted
- lots of shape and muscle to this guy
- definite cow bull here
- dam is a front pasture cow, never misses
- Top 4% Milk, Top 5% WW, Top 9% YW, Top 9% MH, Top 25% MW



Mat. Sister Bar-H Rita 110H



Mat. Brother Bar-H Intrinsic 78L

"Real true faith is man's weakness leaning on God" - Dwight L. Moody



- was not weighed at birth
- born unassisted
- very attractive clean made son of Niagara
- dam is a soft made good uddered daughter of Open Country
- Top 6% BW, Top 7% CED, Top 15% WW, Top 20% YW, Top 20% MCE

BARH 194M

LOT
194M BAR-H NIAGARA 194M
2398439 June 10 2024 BARH 194M



S S NIAGARA Z29
S NIAGARA 0244
S BLOSSOM 0278

HOOVER DAM
JET S S X144
SHIPWHEEL CHINOOK
S BLOSSOM 8378
HA OPEN COUNTRY 2047
S GLORIA 0406
BT TITAN 0626
BAR-H CORA 52A

PERF

BWT
66 lbs.

ADJ WWT
lbs.

ANGUS ^{GS}	CE 10	BW -0.9	WW 69	YW 117	MILK 25
---------------------	----------	------------	----------	-----------	------------

LOT
197M BAR-H INTRINSIC 197M
2398440 June 18 2024 BARH 197M



CONNEALY INTRINSIC
S INTRINSIC 799
S RITA 6341

CONNEALY GREELEY
JAZZY OF CONANGA 4660 860C
CONNEALY FREIGHTLINER
S RITA 4309
3F EPIC 4631OHF M1F NHC
FWJ 7008 OF C085 4029
S SUMMIT 956
HF TIBBIE 93U

PERF

BWT
88 lbs.

ADJ WWT
lbs.

EXAR MONUMENTAL 6056B
BAR-H TIBBIE 17H
BAR-H TIBBIE 87D

ANGUS ^{GS}	CE 6	BW 3.5	WW 74	YW 126	MILK 26
---------------------	---------	-----------	----------	-----------	------------

- was not weighed at birth
- born unassisted
- very good Mid June born Intrinsic son
- his dam 17H is an outstanding cow whose mother is Mindbenders flush sister.
- Top 7% WW, Top 10% YW, Top 15% Doc, Top 25% Marb, Top 25% Milk, Top 25% MW, Top 25% MH, Top 25% Teat, Top 25% Udder



BARH 197M



Maternal Granddam
Bar-H Tibbie 87D

ALL OF OUR YEARLING BULLS WERE BORN UNASSISTED MOSTLY TO FIRST CALF HEIFERS... ALL THE YEARLINGS WERE RAISED BY THEIR MOTHERS ON GRASS WITHOUT ANY CREEP FEED!



LOT
6N

BAR-H REDEMPTION 6N
2434976 January 27 2025 BARH 6N



HEIFER APPROVED

- born unassisted
- dam is a beautiful Niagara first calver with a very good udder and teat score
- grand dam 12E is an elite angus cow
- Top 6% Milk, Top 20% WW, Top 20% YW

EZAR SET UP 9178
EXAR REDEMPTION 2612B
WILKS CHLOE 9060

G A R BIG STEP K715
BASIN LUCY 4261
WAR CAVALRY B063 Z044
VINTAGE CHLOE 6137
S S NIAGARA Z29
S BLOSSOM 0278
S OPEN COUNTRY 454
BAR-H CORA 30A

PERF
BWT
76 lbs.
ADJ WWT
629 lbs.

S NIAGARA 0244
BAR-H BLOSSOM 134L
BAR-H GLORIA 12E

ANGUS ^{GS}	CE 6	BW 1	WW 66	YW 119	MILK 30
----------------------------	----------------	----------------	-----------------	------------------	-------------------



DAM
BAR-H BLOSSOM 134L

"The middle of the road is a poor place to walk. It is a poor place to drive. It is a poor place to be" - Vance Havner



BARH 8N

HEIFER APPROVED

- born unassisted
- sure fire heifer bull here
- Top 4% MCE, Top 7% CED, Top 15% YW, Top 20% BW



DAM
Bar-H Evening Tinge 155L

LOT
8N

BAR-H INCENTIVE 8N
2434979 January 27 2025 BARH 8N



SITZ INCENTIVE 704H
KR INCENTIVE 3052
KR MISS BELL 8036

SITZ STELLAR 726D
SITZ BARBARAMERE NELL 53F
TEF OUTSIDE 514
KR MISS BELL 5443
LD CAPITALIST 316
HF EVENING TINGE 38C
S INTRINSIC 799
BAR-H RITA 23C

PERF

BWT
70 lbs.

ADJ WWT
620 lbs.

ANGUS ^{GS}	CE 10	BW 0.4	WW 65	YW 121	MILK 23
----------------------------	-----------------	------------------	-----------------	------------------	-------------------

LOT
11N

BAR-H REDEMPTION 11N
2434980 January 30 2025 BARH 11N



EZAR SET UP 9178
EXAR REDEMPTION 2612B
WILKS CHLOE 9060

G A R BIG STEP K715
BASIN LUCY 4261
WAR CAVALRY B063 Z044
VINTAGE CHLOE 6137
S OPEN COUNTRY 454
BH ROLLETTE 36T
BT TITAN 0626
BAR-H ANNA 162D

PERF

BWT
66 lbs.

ADJ WWT
646 lbs.

ANGUS ^{GS}	CE 4	BW 1.3	WW 59	YW 106	MILK 29
----------------------------	----------------	------------------	-----------------	------------------	-------------------

HEIFER APPROVED

- born unassisted
- larger framed long bodied Redemption son
- one of the favorites in the pen
- Top 8% Milk



BARH 11N



DAM
Bar-H Fancy 79L

HEIFER APPROVED

- born unassisted
- very well balanced, deep boded and attractively made
- dam is a balanced, attractive nice uddered young female.



DAM OF BARH 12N

LOT 12N BAR-H REDEMPTION 12N

2434982 January 31 2025 BARH 12N



EZAR SET UP 9178
EXAR REDEMPTION 2612B
 WILKS CHLOE 9060

G A R BIG STEP K715
 BASIN LUCY 4261
 WAR CAVALRY B063 Z044
 VINTAGE CHLOE 6137
 S A V SENSATION 5615

HOFFMAN SENSATION 803
BAR-H MISS EVERGREEN 121L
 BAR-H ELBAR 114G

C A BRILL MISS EVERGREEN 101
 BT TITAN 0626
 BAR-H CORA 24B

PERF

BWT
74 lbs.

ADJ WWT
559 lbs.

ANGUS^{GS}

CE
0

BW
2.8

WW
57

YW
106

MILK
25

LOT 13N BAR-H INCENTIVE 13N

2434983 February 01 2025 BARH 13N



SITZ INCENTIVE 704H
KR INCENTIVE 3052
 KR MISS BELL 8036

EXAR GROWTH FUND 0936B
BAR-H BLACKBIRD 10L
 BAR-H GLORIA 68J

SITZ STELLAR 726D
 SITZ BARBAMERE NELL 53F
 TEF OUTSIDE 514
 KR MISS BELL 5443
 DEER VALLEY GROWTH FUND
 VINTAGE BLACKBIRD 6329
 S OPEN COUNTRY 454
 BAR-H ELBAR 39F

PERF

BWT
80 lbs.

ADJ WWT
638 lbs.

ANGUS^{GS}

CE
7

BW
1.8

WW
68

YW
130

MILK
24



BARH 13N

HEIFER APPROVED

- born unassisted
- tremendous growth potential in this young prospect
- his Growth Fund dam is a very good young cow.
- Top 7% YW, Top 7% MCE, Top 20% CED, Top 20% WW



DAM
Bar-H Blackbird 10L

"Confidence is contagious. So is lack of confidence" - Vince Lombardi



LOT
15N **BAR-H REDEMPTION 15N**
 2434984 February 03 2025 BARH 15N



- born unassisted
- thick made and very stout
- outstanding cow family
- Top 4% Milk, Top 15% WW, Top 15% YW

EZAR SET UP 9178
EXAR REDEMPTION 2612B
 WILKS CHLOE 9060

G A R BIG STEP K715
 BASIN LUCY 4261
 WAR CAVALRY B063 Z044
 VINTAGE CHLOE 6137
 S S NIAGARA Z29
 S BLOSSOM 0278
 S TITLST 1145
 BAR-H TIBBIE 77Z

PERF

BWT
 80 lbs.

ADJ WWT
 699 lbs.

S NIAGARA 0244
BAR-H BLOSSOM 118L
 BAR-H CORA 136D

ANGUS ^{CS}	CE 5	BW 1.1	WW 70	YW 122	MILK 31
----------------------------	----------------	------------------	-----------------	------------------	-------------------



DAM
BAR-H BLOSSOM 118L

HEIFER APPROVED

- born unassisted
- long bodied, smooth made heifer bull
- dam is a beautiful Growth Fund daughter
- Top 4% MCE, Top 6% Milk, Top 7% CED, Top 15% BW



DAM OF BARH 32N

LOT 32N BAR-H SENSATION 32N

2448533 February 17 2025 BARH 32N



SAV SENSATION 5615
 HOFFMAN SENSATION 803 CA BRILL MISS EVERGREEN 101
BAR-H SENSATION 22J S SUMMIT 956
 BAR-H TIBBIE 87D HF TIBBIE 93U
 DEER VALLEY GROWTH FUND
 EXAR GROWTH FUND 0936B VINTAGE BLACKBIRD 6329
BAR-H GF BLACKBIRD 31L BAR-H MINDBENDER 141D
 BAR-H TIBBIE 92J BAR-H BLACKBIRD 97E

PERF
BWT 74 lbs.
ADJ WWT 652 lbs.

ANGUS ^{GS}	CE 10	BW -0.1	WW 57	YW 105	MILK 30
---------------------	----------	------------	----------	-----------	------------

LOT 42N BAR-H SENSATION 42N

2439541 February 22 2025 BARH 42N



SAV SENSATION 5615
 HOFFMAN SENSATION 803 CA BRILL MISS EVERGREEN 101
BAR-H SENSATION 22J S SUMMIT 956
 BAR-H TIBBIE 87D HF TIBBIE 93U
 DEER VALLEY GROWTH FUND
 EXAR GROWTH FUND 0936B VINTAGE BLACKBIRD 6329
BAR-H BLACKBIRD GF 68L HOFFMAN SENSATION 803
 BAR-H MISS EVERGREEN 28J BAR-H HOPE 7A

PERF
BWT 68 lbs.
ADJ WWT 680 lbs.

ANGUS ^{GS}	CE 8	BW 0.7	WW 57	YW 104	MILK 31
---------------------	---------	-----------	----------	-----------	------------



BARH 42N

HEIFER APPROVED

- born unassisted
- cow family is filled with great udders and teat scores.
- keep every female
- Top 4% Milk, Top 7% MCE, Top 15% CED, Top 25% BW



DAM
 Bar-H Blackbird GF 68L



LOT
45N

BAR-H INCENTIVE 45N

2439555 February 25 2025 BARH 45N



SITZ INCENTIVE 704H
KR INCENTIVE 3052
KR MISS BELL 8036

SITZ STELLAR 726D
SITZ BARBARAMERE NELL 53F
TEF OUTSIDE 514
KR MISS BELL 5443
S S NIAGARA Z29
S BLOSSOM 0278
BAR-H BALANCER 14X
BH EVENING TINGE 53Y

PERF

BWT
89 lbs.

ADJ WWT
646 lbs.

S NIAGARA 0244
BAR-H BLOSSOM 250K
BAR-H HOPE 7A

ANGUS ^{CS}	CE 4	BW 2.3	WW 65	YW 119	MILK 29
----------------------------	----------------	------------------	-----------------	------------------	-------------------



- born unassited
- outstanding herd bull candidate by KR Incentive
- dam is one of our favorite Niagara daughters
- very balanced set of EPD's
- Top 8% Milk, Top 9% MW, Top 15% MH, Top 20% YW, Top 20% CW, Top 25% WW



DAM - Bar-H Blossom 250K

HEIFER APPROVED

- born unassisted
- dam is a big bodied 2 yr old first calver with a very good udder and teat score.
- very complete herd bull and heifer candidate
- Top 4% YW, Top 4% MCE, Top 7% WW, Top 10% CED, Top 25% Milk



DAM
Bar-H GF Tibbie 4L

LOT 48N BAR-H INCENTIVE 48N

2439810 March 04 2025 BARH 48N



SITZ INCENTIVE 704H
KR INCENTIVE 3052
KR MISS BELL 8036

SITZ STELLAR 726D
SITZ BARBARAMERE NELL 53F
TEF OUTSIDE 514
KR MISS BELL 5443
DEER VALLEY GROWTH FUND
VINTAGE BLACKBIRD 6329
BAR-E-L ROYAL MINT 88G
BAR-H TIBBIE 75G

PERF

BWT
71 lbs.

ADJ WWT
680 lbs.

EXAR GROWTH FUND 0936B
BAR-H GF TIBBIE 4L
BAR-H TIBBIE RM 5J

ANGUS^{GS}

CE
9

BW
0.9

WW
74

YW
138

MILK
26

LOT 50N BAR-H INCENTIVE 50N

2439812 March 07 2025 BARH 50N



SITZ INCENTIVE 704H
KR INCENTIVE 3052
KR MISS BELL 8036

SITZ STELLAR 726D
SITZ BARBARAMERE NELL 53F
TEF OUTSIDE 514
KR MISS BELL 5443
DEER VALLEY GROWTH FUND
VINTAGE BLACKBIRD 6329
CASINO BOMBER N33
S ELBA 1004

PERF

BWT
74 lbs.

ADJ WWT
728 lbs.

EXAR GROWTH FUND 0936B
BAR-H GF ELBA 109L
S ELBA 025

ANGUS^{GS}

CE
9

BW
0.3

WW
72

YW
131

MILK
27



HEIFER APPROVED

- born unassisted
- larger framed, long bodied
- dam is very good and cow family is one of Spickler Ranches finest
- Top 7% YW, Top 7% MCE, Top 9% WW, Top 10% CED, Top 20% BW, Top 20% Milk



DAM
Bar-H GF Elba 109L

BARH 50N



HEIFER APPROVED

- born unassisted
- moderate framed thick made and very complete
- dam is a big bodied and smooth made
- use with confidence on heifers
- Top 3% CED, Top 4% MCE, Top 7% BW, Top 7% YW, Top 8% WW, Top 8% RADG, Top 8% Milk, Top 15% MW, Top 20% CW, Top 25% MH

BARH 50N



DAM
TAMBRI DELIA 14K

LOT
53N **BAR-H INCENTIVE 53N**
2439815 March 19 2025 BARH 53N



SITZ INCENTIVE 704H	SITZ STELLAR 726D
KR INCENTIVE 3052	SITZ BARBARAMERE NELL 53F
KR MISS BELL 8036	TEF OUTSIDE 514
	KR MISS BELL 5443
	BALDRIDGE COLONEL C251
MONTANA ENTERPRISE 7193	SPRINGFIELD BLACKCAP 1182
TAMBRI DELIA 14K	TAMBRI DIESEL 16D
TAMBRI DELIA 44F	WMC DELIA 18X

PERF

BWT
68 lbs.

ADJ WWT
710 lbs.

ANGUS^{CS}	CE 12	BW -0.7	WW 73	YW 130	MILK 29
---------------------------	-----------------	-------------------	-----------------	------------------	-------------------

Judging at The Royal
JOHN JUDGED THE MASTERFEEDS NATIONAL JR BEEF HEIFER SHOW SHOWMANSHIP
AT THE ROYAL AGRICULTURAL WINTER FAIR 2025

"A winner never stops trying" - Tom Landry



LOT
59N **BAR-H 22 SENSATION 59N**
2440079 March 29 2025 BARH 59N



- born unassisted
- very well designed, nicely balanced son of Bar- H Sensation 22j
- dam is a big bodied good uddered
- top herd bull candidate here
- Top 4% Milk, Top 20% YW, Top 25% WW

S A V SENSATION 5615
HOFFMAN SENSATION 803 C A BRILL MISS EVERGREEN 101
BAR-H SENSATION 22J S SUMMIT 956
BAR-H TIBBIE 87D HF TIBBIE 93U
BAR-H MINDBENDER 141D S SUMMIT 956
BAR-H TIBBIE 92K HF TIBBIE 93U
BAR-H ELBAR 60F BT TITAN 0626
BAR-H CORA 90C

PERF
BWT 89 lbs.
ADJ WWT 738 lbs.

ANGUS ^{CS}	CE 2	BW 2.4	WW 65	YW 116	MILK 31
----------------------------	----------------	------------------	-----------------	------------------	-------------------



DAM
BAR-H TIBBIE 92K

"Confidence is contagious. So is lack of confidence" - Vince Lombardi

show highlights

2025 SHOW HIGHLIGHTS

BAR-H MISS EVERGREEN 43L

Owned with Taylor Makey
With Bar-H Vindicator 2N at side

Reserve Champion Black Angus Female
Harding Agricultural Fair

Supreme Champion Female
Prince Albert Exhibition

Reserve Champion Black Angus Female
3rd Overall Supreme
Young Ranchmans All Breeds Livestock Show

Grand Champion Black Angus Female
Manitoba Ag Ex

CN Beef Supreme Top 10 Finalist
Canadian Western Agribition



BAR-H LAND & CATTLE CO. 2025 CWA GRAND CHAMPION



HAYNES PAPA 0100 *K* V A R INDEX 3282



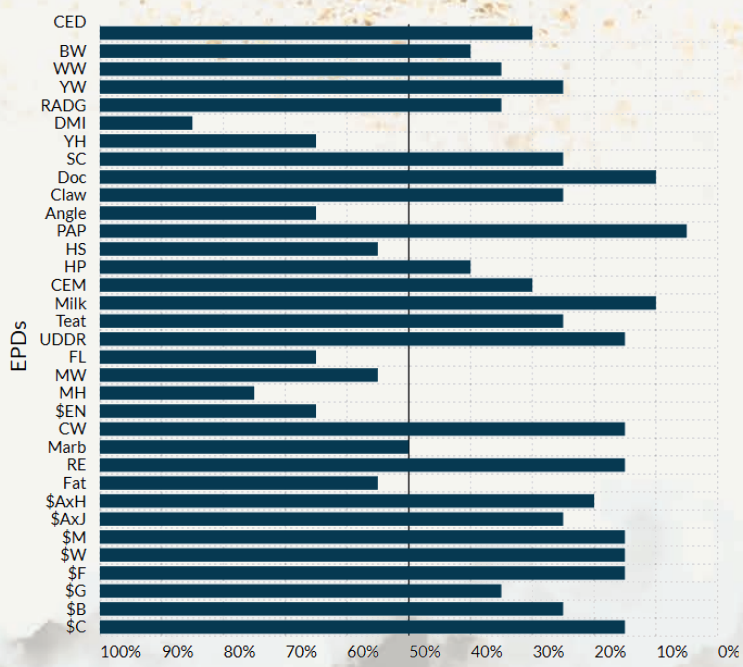
New
Herdsire
Aquisition

P RIVERBEND
Papa
M166

AAA+*20964585

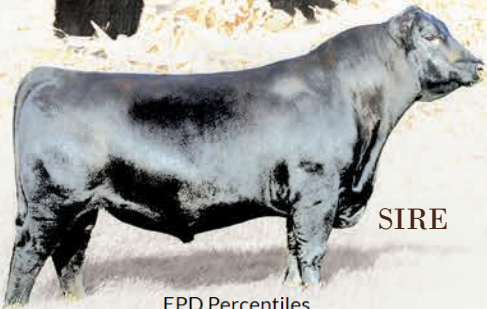
1/22/2024

OWNED WITH RIVERBEND RANCH



50th Percentile is the Breed Avg.

New Herdsire Aquisition

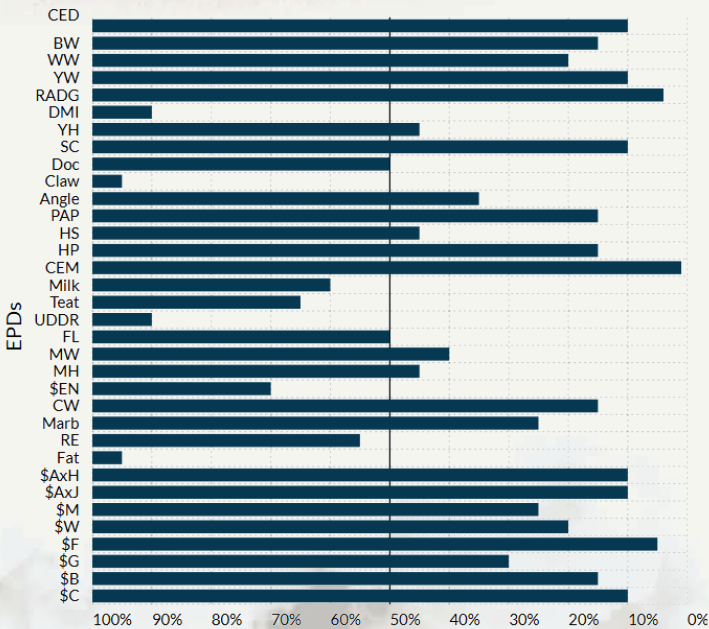


SIRE

EPD Percentiles

TR States man

4041M



50th Percentile is the Breed Avg.

VIRGINIA TECH STATESMAN X J & J WEIGH UP 240

4141 // AAA+*21131628 // 2/25/2024

OWNED WITH THOMAS RANCH

terms and conditions

THE FINE PRINT

TERMS

The terms of the sale are cash or cheque, payable at par at the sale location. The right of property shall not pass until after settlement has been made; no invoicing on buyers in attendance unless previous arrangements have been made. Every animal sells to the highest bidder and in cases of disputes, the auctioneer's decision will be final.

Announcements made from the auction block will take precedence over the printed matter in the catalogue. Current exchange rates will be announced sale day. All monies are in Canadian funds.

CERTIFICATE OF REGISTRATION

Each animal will carry papers issued by the Canadian Angus Association. A certificate of registry duly transferred will be furnished to the buyer for each animal after payment has been made.

Volume discounts: 5 bulls or more 5%, 10 bulls or more 10%.

GENOMIC ENHANCED EPD'S

All registered sale lots have genomic enhanced EPDs by the Angus GS test and have their sire verified. Note: Because of weather DNA was delayed in transit and results will be available after April 1st.

GUARANTEE

All cattle sell under the standard terms and conditions of the Canadian Angus Association. All bulls are fully guaranteed against injury or death by Bar-H Land & Cattle Co for the first breeding season. We ask that you contact us as soon as possible regarding any claims. All claims must be made by October 1, 2024.

DELIVERY

Bar-H Land & Cattle Co offers free delivery of all bulls up until May 1st. After May 1st, we ask that you pick your bulls up at Ranch Headquarters in Langenburg, SK.

All bulls selling have passed a breeding soundness examination by Dr. Rebecca Girven, Valleyflats Vet Services, Moosomin, SK.

HEALTH

All animals in the sale have met all necessary health requirements.

LIABILITIES

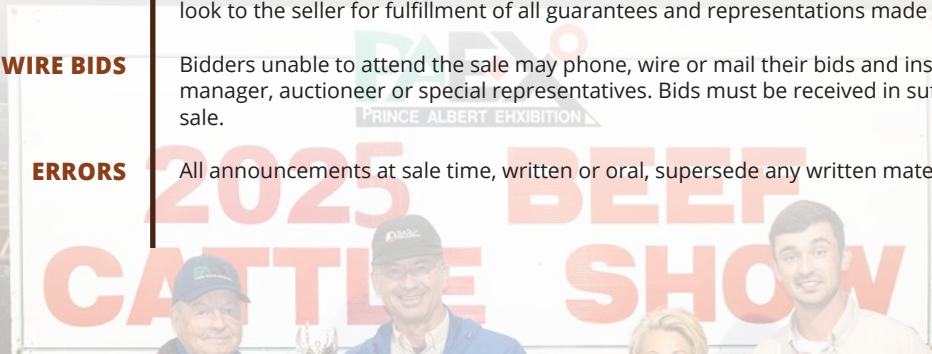
All persons attend the sale at their own risk. The seller, facility owner and sale manager assume no liability legal or otherwise, for any accidents that occur. It is understood that T Bar C Cattle Co. (2013) Ltd. is acting only as a medium between buyer and seller and is not responsible for any failure on the part of either party to live up to his obligations. Neither does T Bar C Cattle Co. (2013) Ltd. assume any financial obligations to collect or enforce collection of any monies between parties and any legal action that may in exceptional cases be taken must be between the buyer and the seller. T Bar C Cattle Co. (2013) Ltd. assumes no responsibility for any credit extended by the seller to the buyer. The buyer must look to the seller for fulfillment of all guarantees and representations made hereunder.

PHONE, MAIL & WIRE BIDS

Bidders unable to attend the sale may phone, wire or mail their bids and instructions to the sale manager, auctioneer or special representatives. Bids must be received in sufficient time prior to the sale.

ERRORS

All announcements at sale time, written or oral, supersede any written material in the catalogue.



Return Undeliverable
Canadian Addresses to:

T Bar C Cattle Co. Ltd.
Box 2330
Warman, SK
S0K 4S0



Today's
Publishing